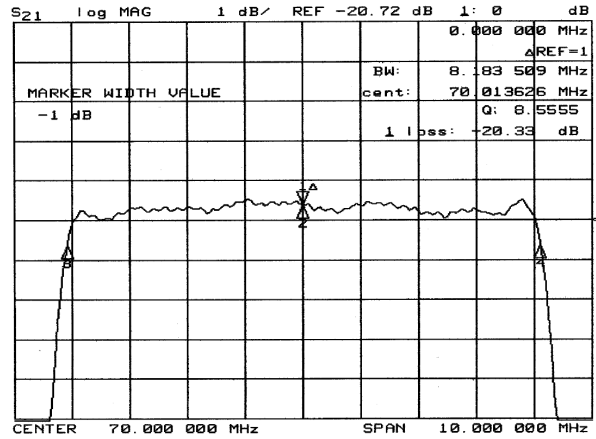
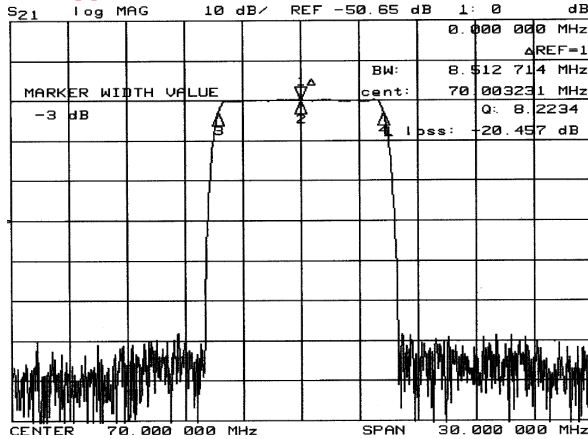


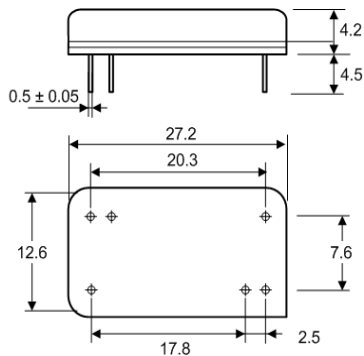
Typical Performance



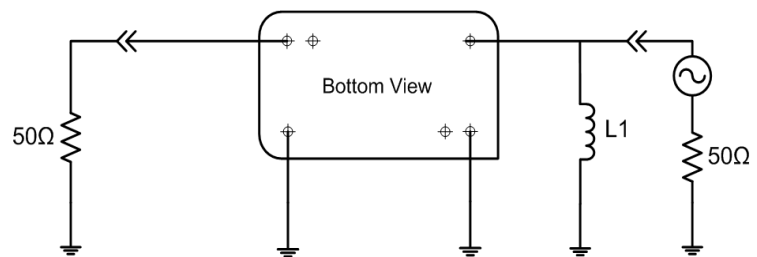
Specification

| Index | Unit | Min | Typical | Max |
|-------------------------|--------|------------|---------|-------|
| Center Frequency | MHz | 69.92 | 70.00 | 70.08 |
| Insertion Loss | dB | - | 20.5 | 22.0 |
| 1 dB Bandwidth | MHz | 8.00 | 8.18 | - |
| 3 dB Bandwidth | MHz | 8.40 | 8.50 | - |
| 40 dB Bandwidth | MHz | - | 9.90 | 10.20 |
| Passband Ripple | dB | - | 0.55 | 1.00 |
| Group Delay Variation | nsec | - | 100 | 200 |
| Absolute Delay | μsec | - | 2.42 | - |
| Ultimate Rejection | dB | 50 | 60 | - |
| Substrate Material | - | 128-LiNbO3 | | |
| Temperature Coefficient | ppm/°C | -72 | | |
| Package | mm | 27 | | |

Package Dimension



Matching Configuration



Source / Load Impedance = 50Ω
 Ambient Temperature = 25°C