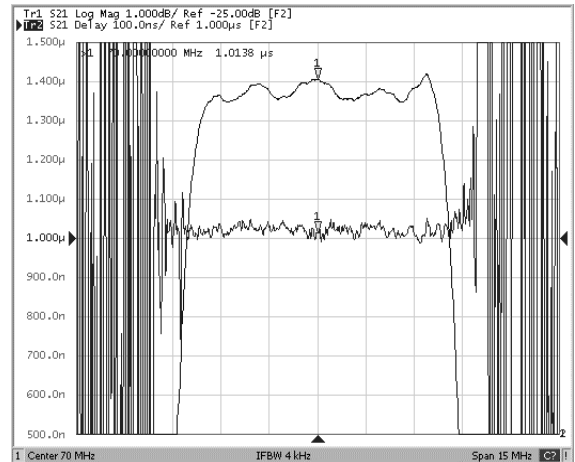
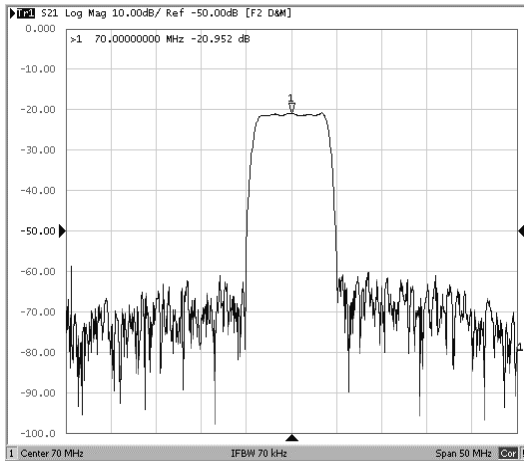


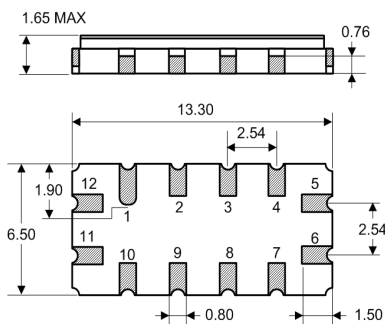
Typical Performance



Specification

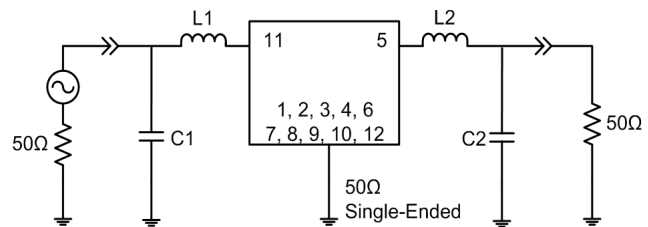
Index	Unit	Min	Typical	Max
Center Frequency	MHz	69.8	70.0	70.2
1dB bandwidth	MHz	7.0	7.3	-
3dB bandwidth	MHz	7.3	7.9	-
40dB bandwidth	MHz	-	10.2	10.75
Insertion Loss	dB	-	21.0	23.0
Amplitude ripple	dB	-	0.8	1.0
Group Delay ripple	nsec	-	50.0	100.00
Attenuation : (Reference level from 0 dB)				
10 ~ 64 MHz	dB	55.0	63.0	-
76 ~ 140 MHz	dB	55.0	63.0	-
Temperature Coefficient	ppm/°C	-	-18.0	-
Package	mm	13.3 x 6.5 x 1.65		

Package Dimension



11: RF Input
5: RF Output
1, 2, 3, 4, 6, 7, 8, 9, 10, 12: To be Ground

Matching Configuration



C1 = 47pF, C2 = 52pF, L1 = 180nH, L2 = 180nH
Source / Load Impedance = 50Ω
Ambient Temperature = 25°C