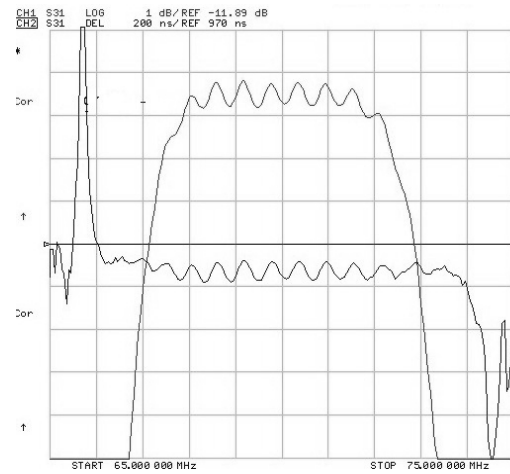
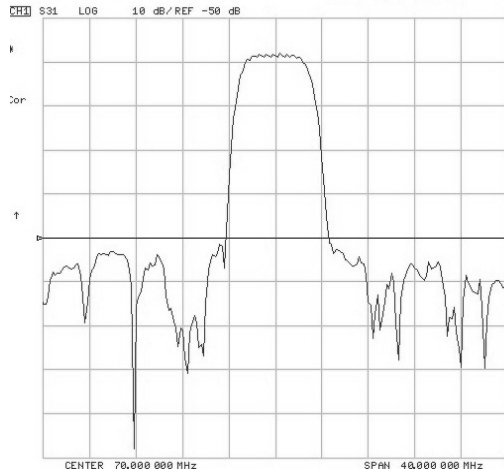


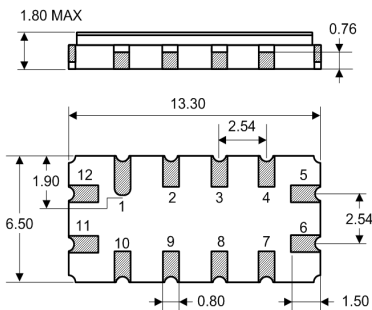
### Typical Performance



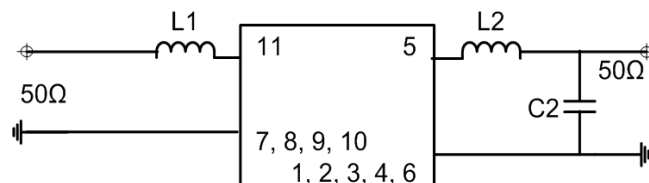
### Specification

Index	Unit	Min	Typical	Max
Center Frequency	MHz	69.8	70.0	70.2
1dB bandwidth	MHz	4.4	4.45	-
3dB bandwidth	MHz	5.0	5.50	-
40dB bandwidth	MHz	-	8.6	10.25
Insertion Loss	dB	-	8.0	9.0
Passband ripple	dB	-	0.78	1.0
Group Delay ripple	nS	-	119.0	150.0
Attenuation : (Reference level from 0 dB)				
0 ~ 64.25 MHz	dB	40.0	45.0	-
75.75 ~ 140 MHz	dB	40.0	44.0	-
Temperature Coefficient	ppm/°C	-	-94.0	-
Package	mm	13.3 x 6.5 x 1.8		

### Package Dimension



### Matching Configuration



11: RF Input  
 5: RF Output  
 12: Input Ground    6: Output Ground  
 1, 2, 3, 4, 7, 8, 9, 10: To be Ground

L1 = 200nH, L2 = 120nH, C2 = 10pF  
 Source / Load Impedance = 50Ω  
 Ambient Temperature = 25°C

Email: [sales@sawtron.com](mailto:sales@sawtron.com) | Tel: 1-858-674-6434 | Fax 1-619-374-7262

**RoHS**