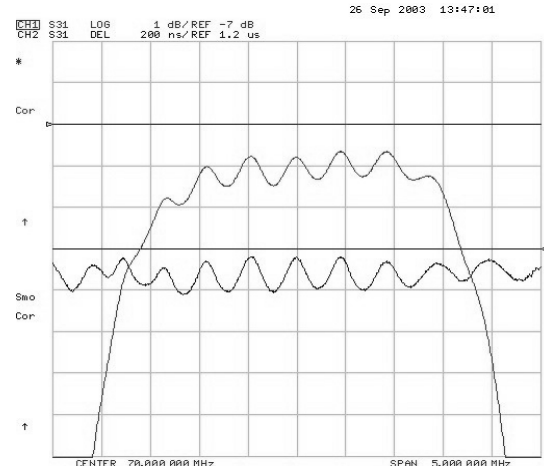
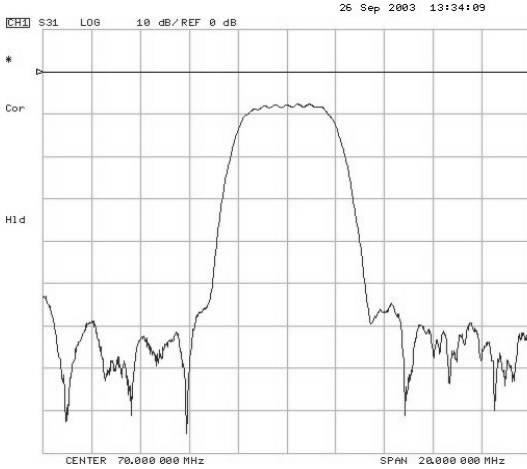


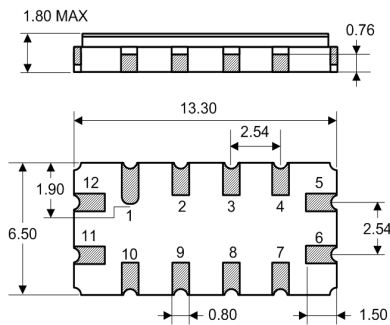
Typical Performance



Specification

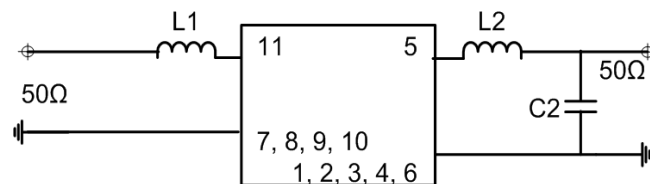
Index	Unit	Min	Typical	Max
Center Frequency	MHz	69.85	70.0	70.15
1dB bandwidth	MHz	2.3	2.63	-
3dB bandwidth	MHz	3.0	3.55	-
35dB bandwidth	MHz	-	6.0	7.5
Insertion Loss	dB	-	7.5	8.2
Amplitude ripple	dB	-	0.75	1.0
Group Delay ripple	nS	-	155.0	190.0
Attenuation : (Reference level from Min IL)				
10 ~ 66 MHz	dB	40.0	45.0	-
74 ~ 140 MHz	dB	40.0	45.0	-
Temperature Coefficient	ppm/°C	-	-94.0	-
Package	mm	13.3 x 6.5 x 1.8		

Package Dimension



- 11: RF Input
- 5: RF Output
- 12: Input Ground 6: Output Ground
- 1, 2, 3, 4, 7, 8, 9, 10: To be Ground

Matching Configuration



L1 = 220nH, L2 = 56nH, C2 = 22pF
 Source / Load Impedance = 50Ω
 Ambient Temperature = 25°C