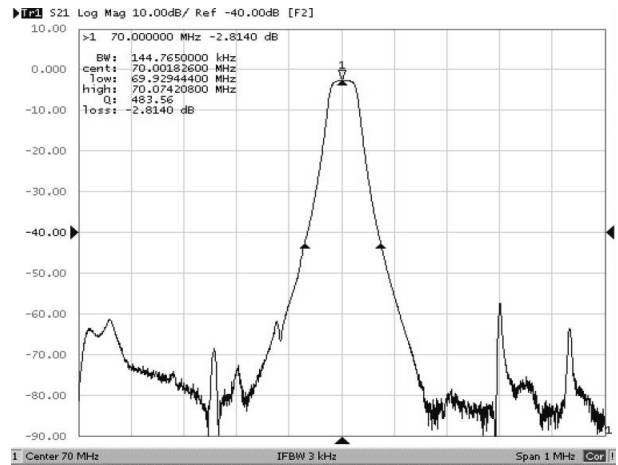
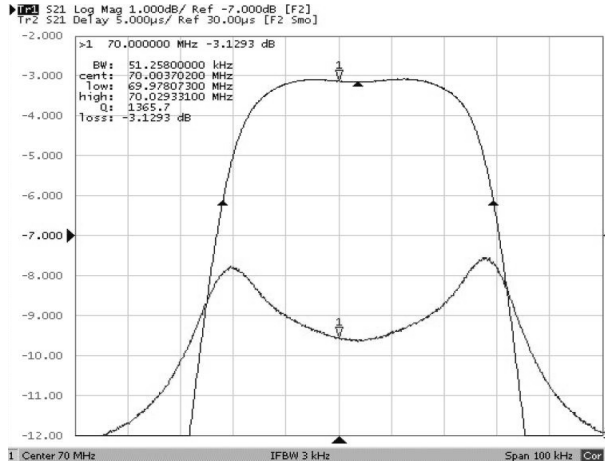


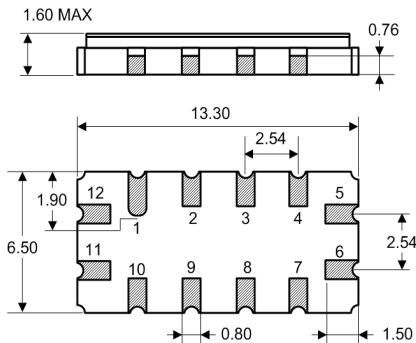
Typical Performance



Specification

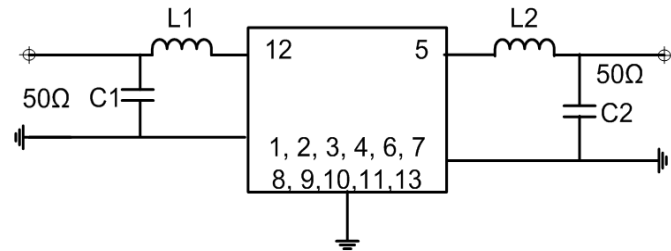
Index	Unit	Min	Typical	Max
Center Frequency	MHz	69.955	70.00	70.044
Insertion Loss	dB	-	3.2	6.0
1 dB Bandwidth	MHz	-	-	-
3 dB Bandwidth	MHz	0.03	0.05	-
40 dB Bandwidth	MHz	-	0.14	0.20
Passband Ripple	dB	-	-	-
Group Delay Variation	μsec	-	6	12
Absolute Delay	μsec	-	16.00	-
Ultimate Rejection	dB	0.00		
Package	mm ²	13.3 x 6.5 x 1.6		
Substrate Material		-		
Temperature Coefficient	ppm/°C ²	-0.032		

Package Dimension



12 : Input 13 : RF Input Return
 5 : Output 6 : RF Output Return
 1, 2, 3, 4, 7, 8, 10, 11 : Ground

Matching Configuration



L1=390nH, L2=390nH, C1=6pF, C2=6pF
 Source / Load Impedance = 50Ω
 Ambient Temperature = 25°C